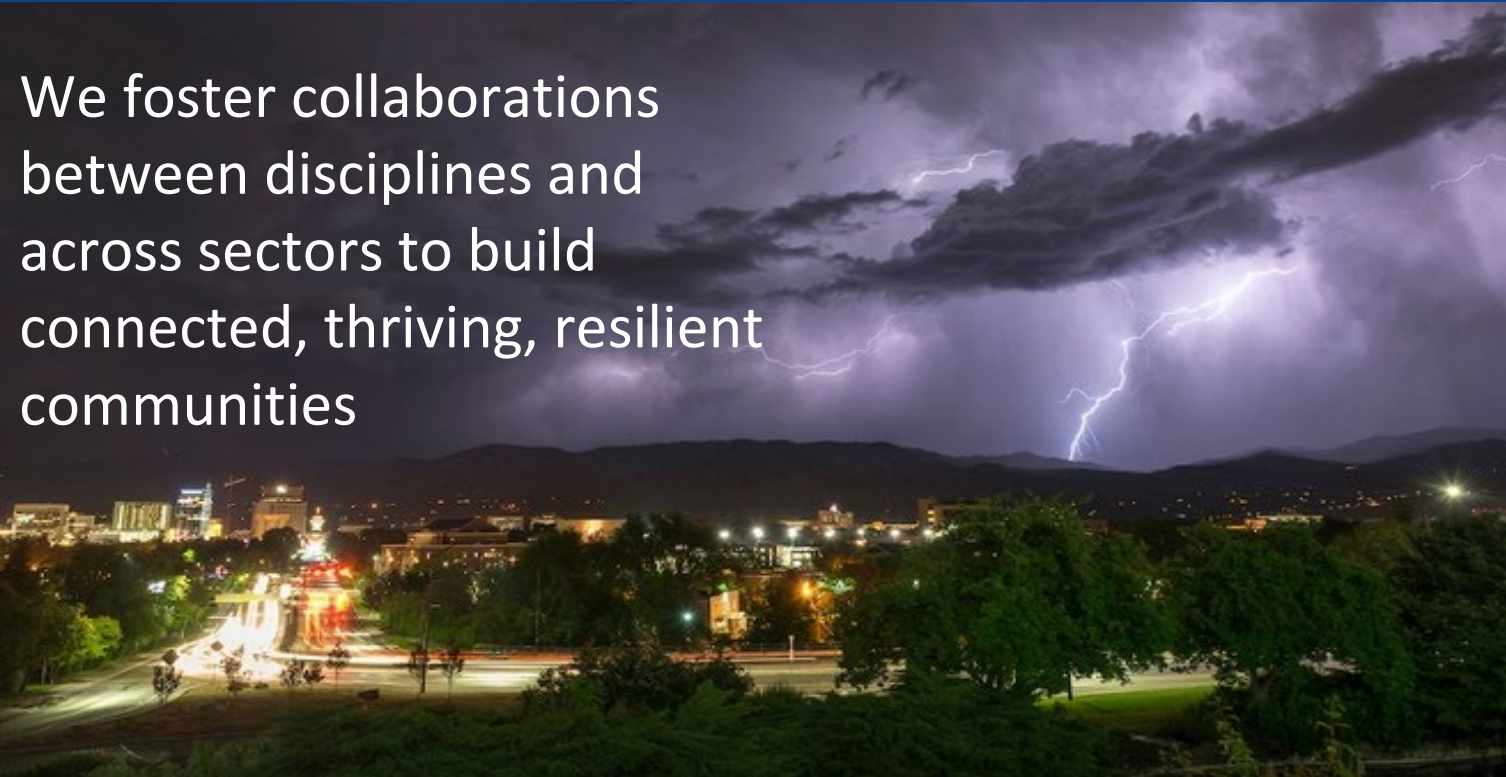


HAZARD AND CLIMATE RESILIENCE INSTITUTE

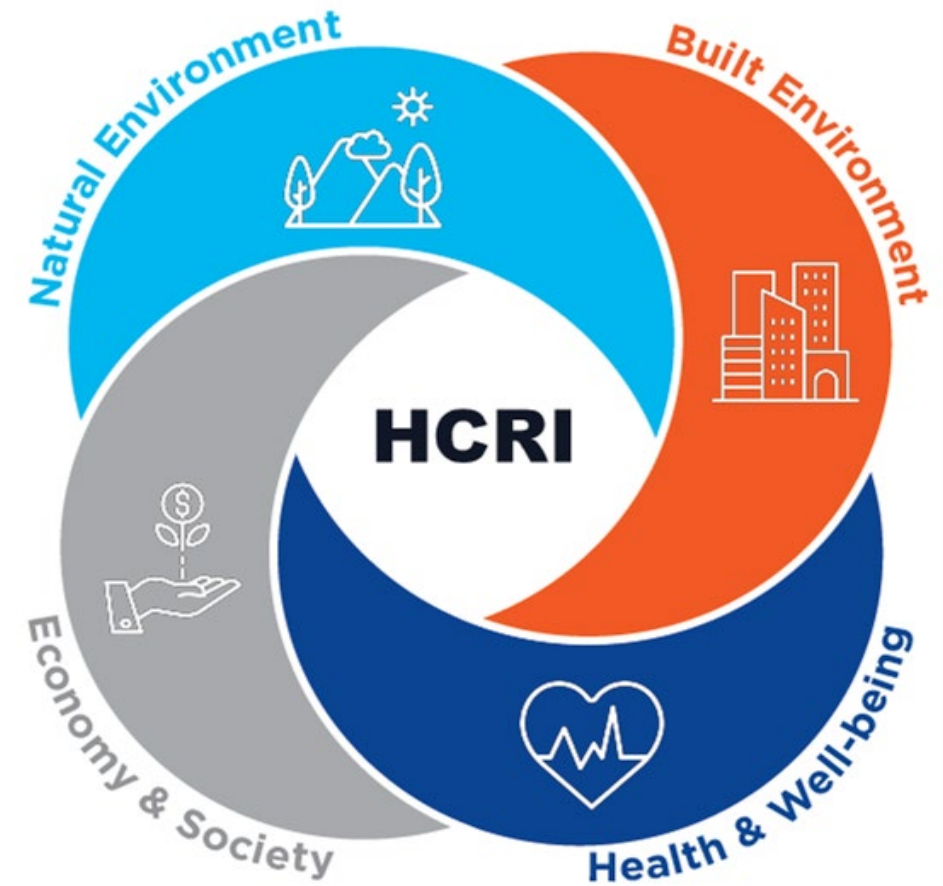
We foster collaborations between disciplines and across sectors to build connected, thriving, resilient communities



Dr. Brittany Brand, Director for the Boise State HCRI



BOISE STATE UNIVERSITY



<https://www.boisestate.edu/research-hcri/>

Building Holistic Community Resilience



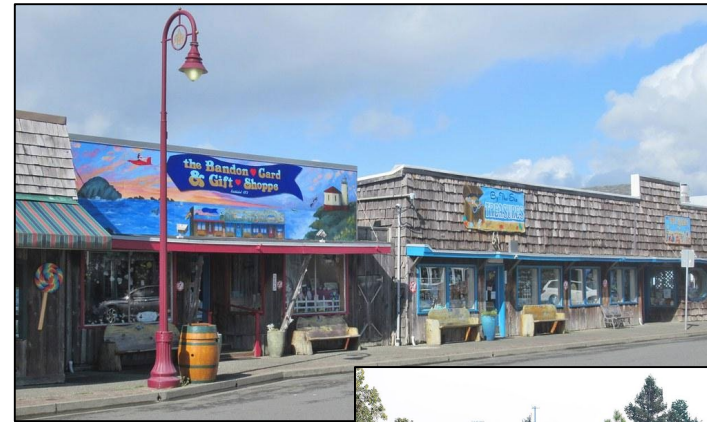
RV

Take Home Message:

Community Resilience is multifaceted and requires a collaborative approach

Goal: Reduce social and economic impacts of adverse events while building toward a healthy, thriving community.

A different trajectory...



What you will get today



What are characteristics of a resilient community?

Community Resilience

The capacity of individuals, communities, institutions, businesses, and systems to **thrive** no matter what kinds of chronic stresses and acute shocks they experience¹.



Boise River Flooding (2017)



Highway 55 Rockslide (2020)



Water Scarcity and Idaho Agriculture



Characteristics of Resilient Communities

1. Collective Identity & Community Support
2. Safeguards to Human Health & Social Welfare
3. Safe & Affordable Housing
4. Diverse Livelihoods & Employment
5. Sustainable Economy
6. Effective Leadership
7. Built to Last
8. Effective Disaster Management
9. Natural Stewardship
10. Thriving Today and in the Future
11. Crime & Justice
12. Reliable & Secure Communications & Technology

Case Study: Brightly, Oregon



Collective Identity and Community Support

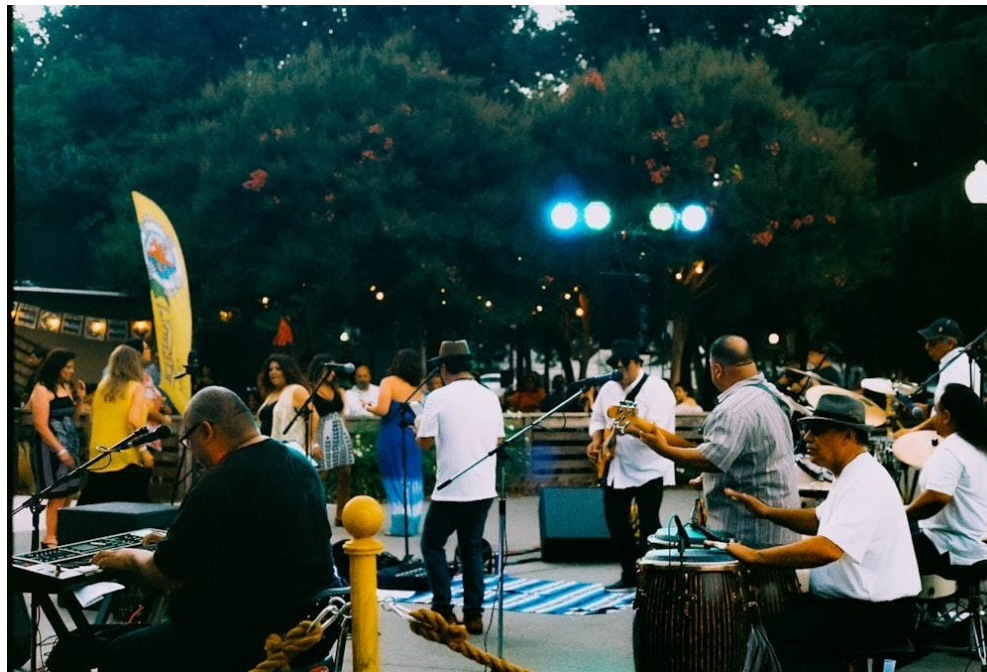
Food Bank through
Local Church



Youth pitch in to prevent flooding



Collective Identity and Community Support



Collective Identity and Community Support



Safeguards to Human Health and Social Welfare



Safeguards to Human Health and Social Welfare



Safeguards to Human Health and Social Welfare



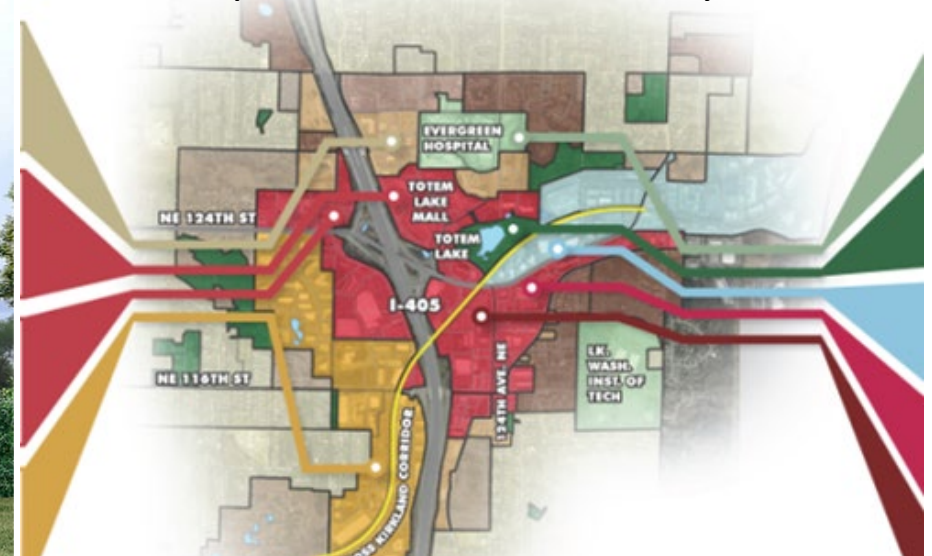
Safe and Affordable Housing



New prefabricated home installed in Brightly



Plan to expand sewer and water system



Safeguards to Human Health and Social Welfare



**Collective Identity and Community Support
Safeguards to Human Health and Social Welfare
Safe and Affordable Housing**



Menti.com

Diverse Livelihoods and Employment - Sustainable Economy



Diverse Livelihoods and Employment - Sustainable Economy



Diverse Livelihoods and Employment - Sustainable Economy



Diverse Livelihoods and Employment - Sustainable Economy



Diverse Livelihoods and Employment - Sustainable Economy



Effective Leadership

Mayor Brandon Schmidt (bottom right), posing with USDA Rural Development. Mayor Schmidt is in his 12th year serving as Mayor of Brightly

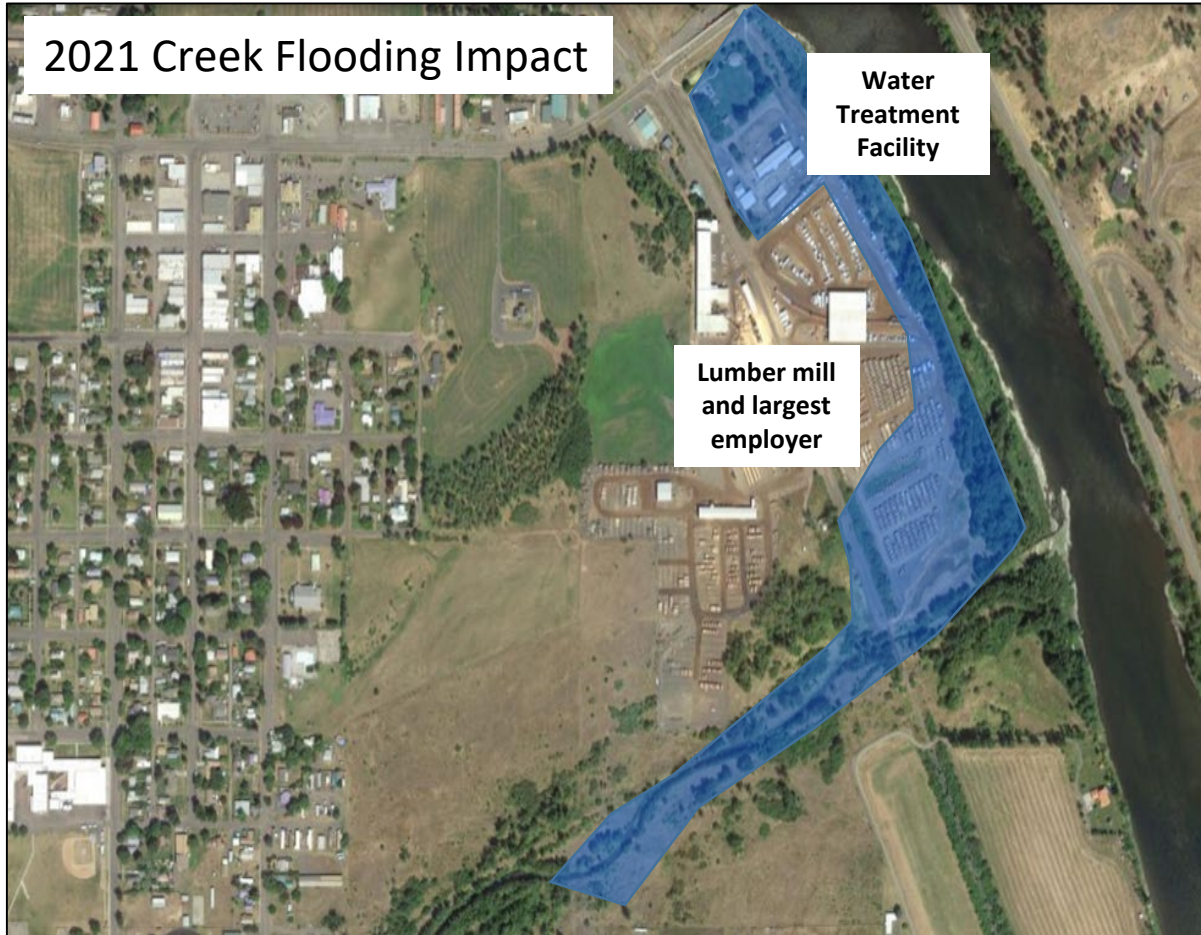


Sparsely attended City Council meeting



Menti.com

Effective Disaster Management - Natural Stewardship - Built to Last

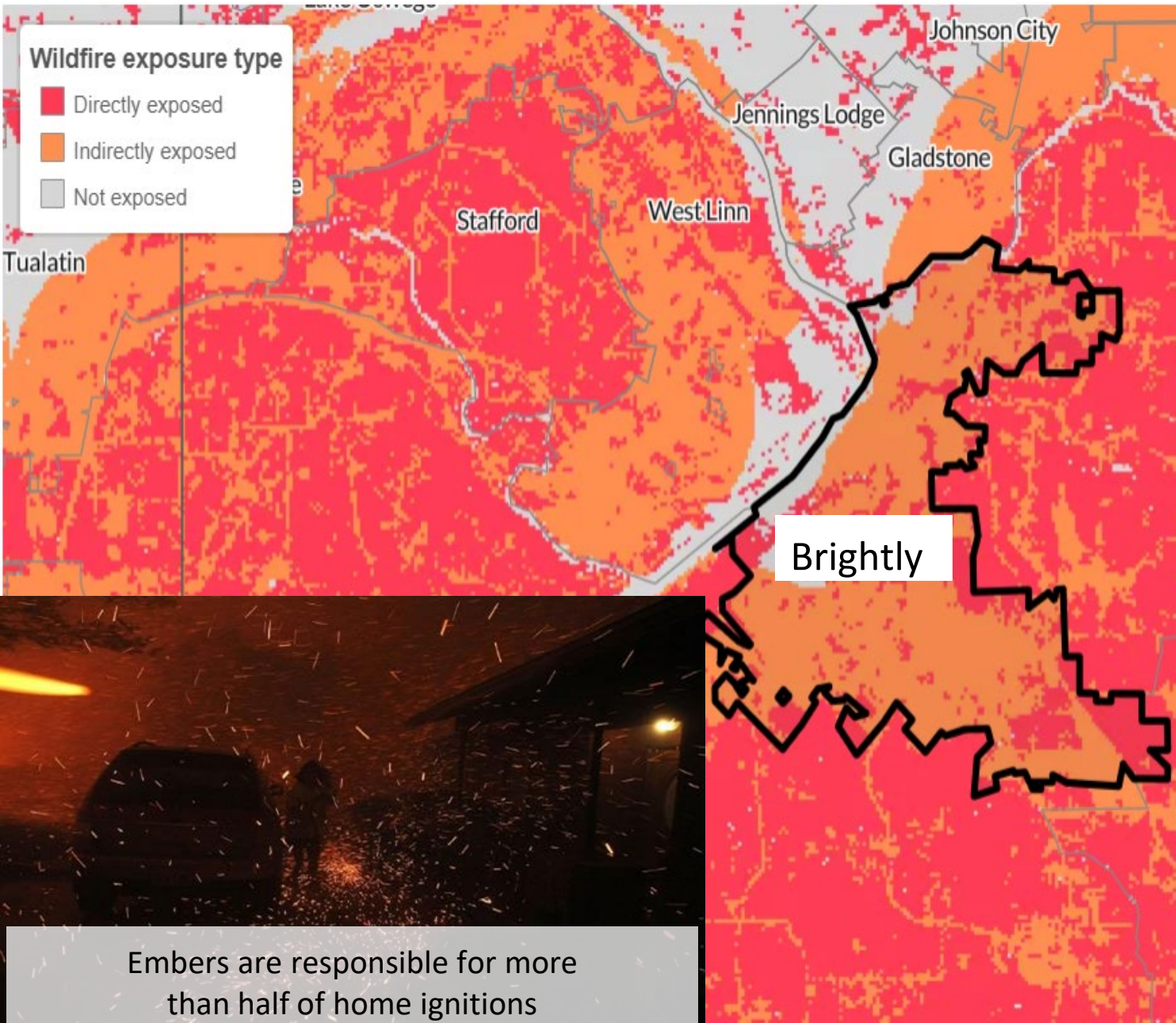


Effective Disaster Management - Natural Stewardship - Built to Last

Salmon and trout have not been seen in this creek in 20 years



Effective Disaster Management - Natural Stewardship - Built to Last



Embers are responsible for more than half of home ignitions

Wildfire Household Wildfire Protection Actions

Remove flammable debris



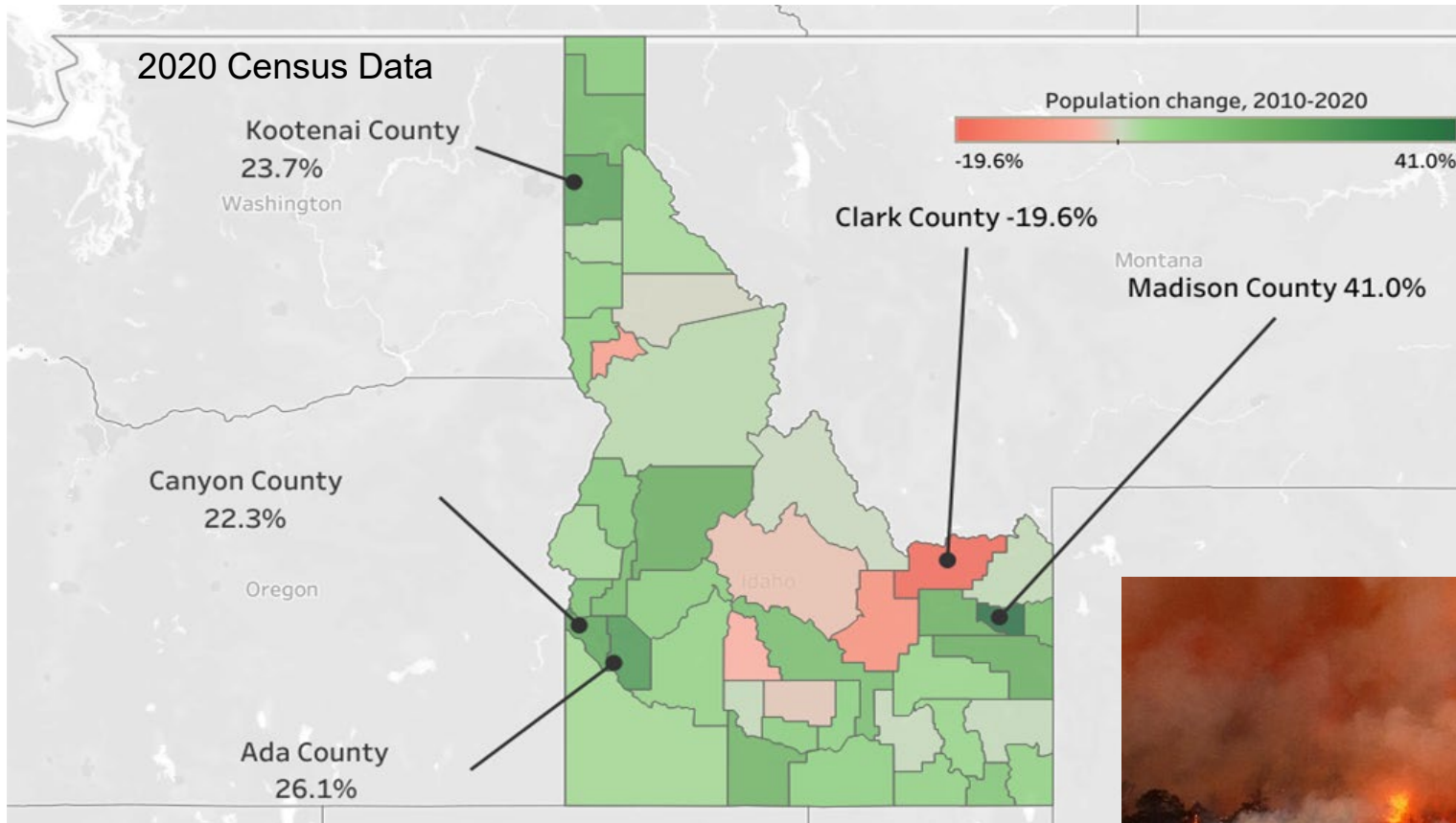
Move wood piles away from structures



Remove flammable vegetation



Thriving Today and in the Future



Idaho Extreme Events Risk:

- Less frequent, but more intense precipitation
- Wildfire
- Heat
- Drought



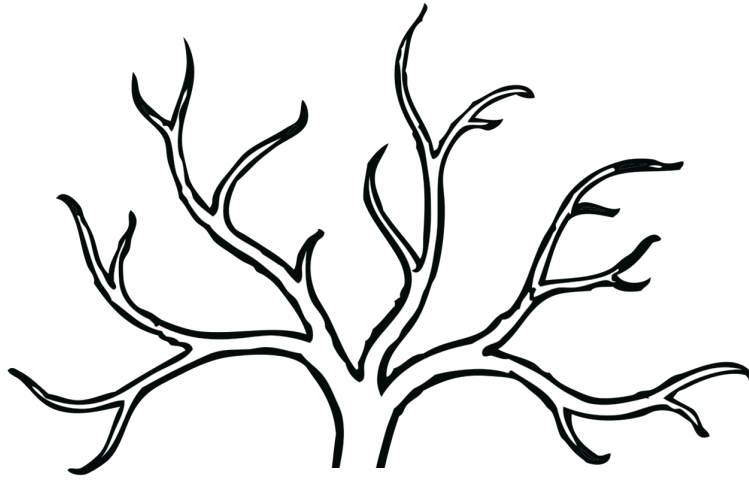
Menti.com

Case Study: Brightly, Oregon



Challenge Tree

Issues in the Community



Core Challenge

Root Causes

Solution Tree

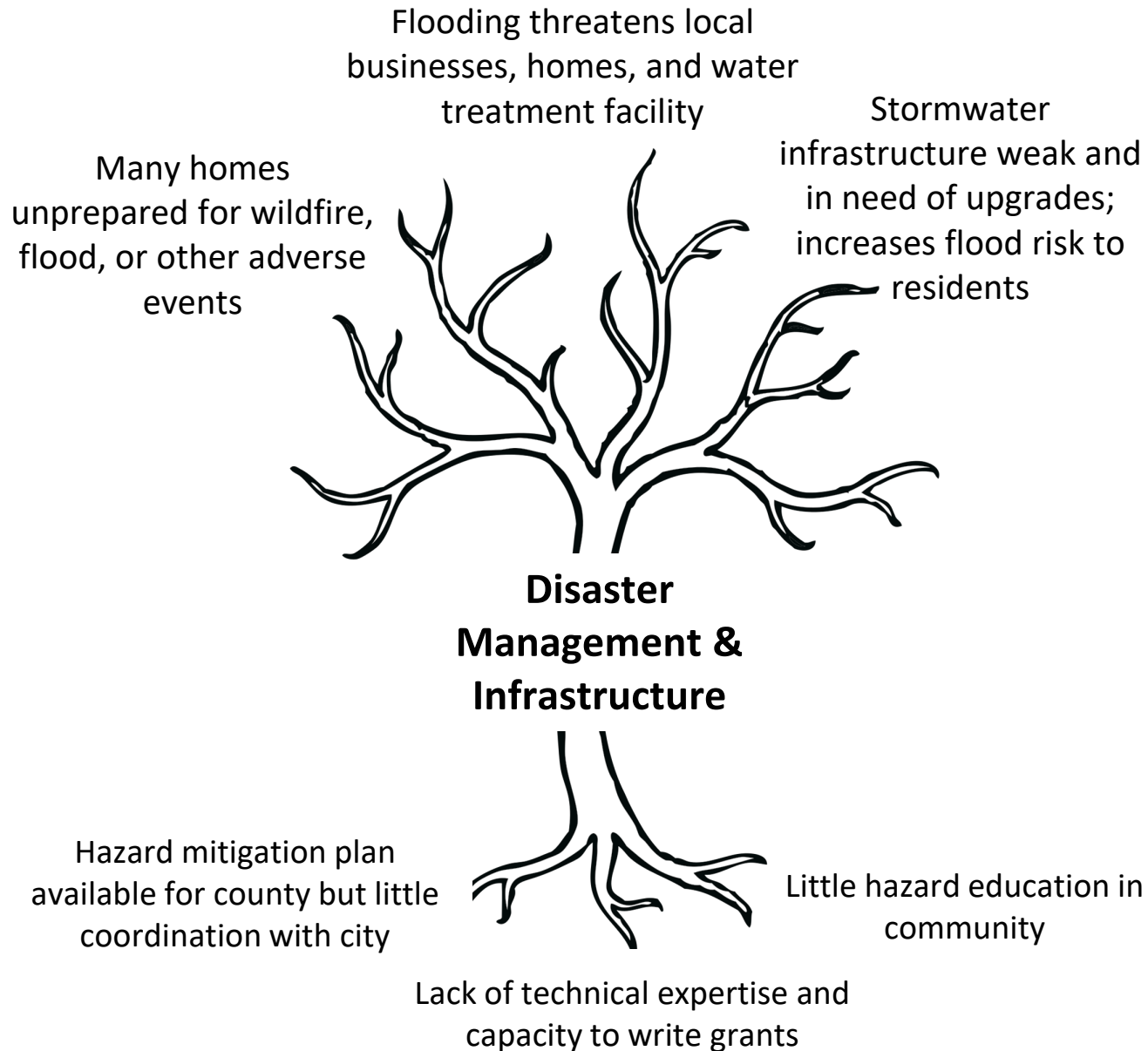
Changes you Expect to see
in the Community



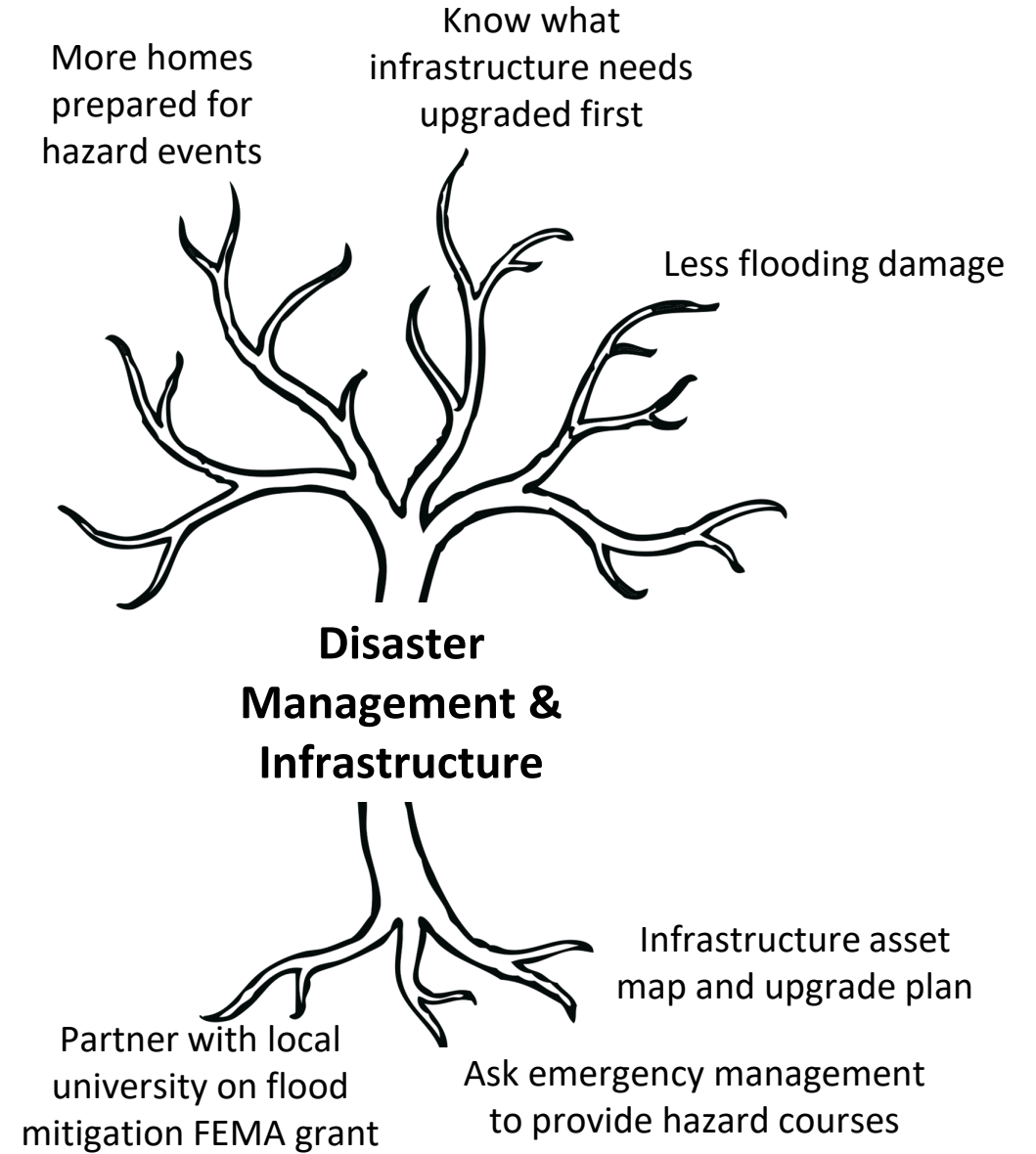
Core Challenge

Solutions

Challenge Tree



Solution Tree



Solution Tree

Activity (10 minutes):

At your table, review the root causes for your Resilience Characteristic(s)

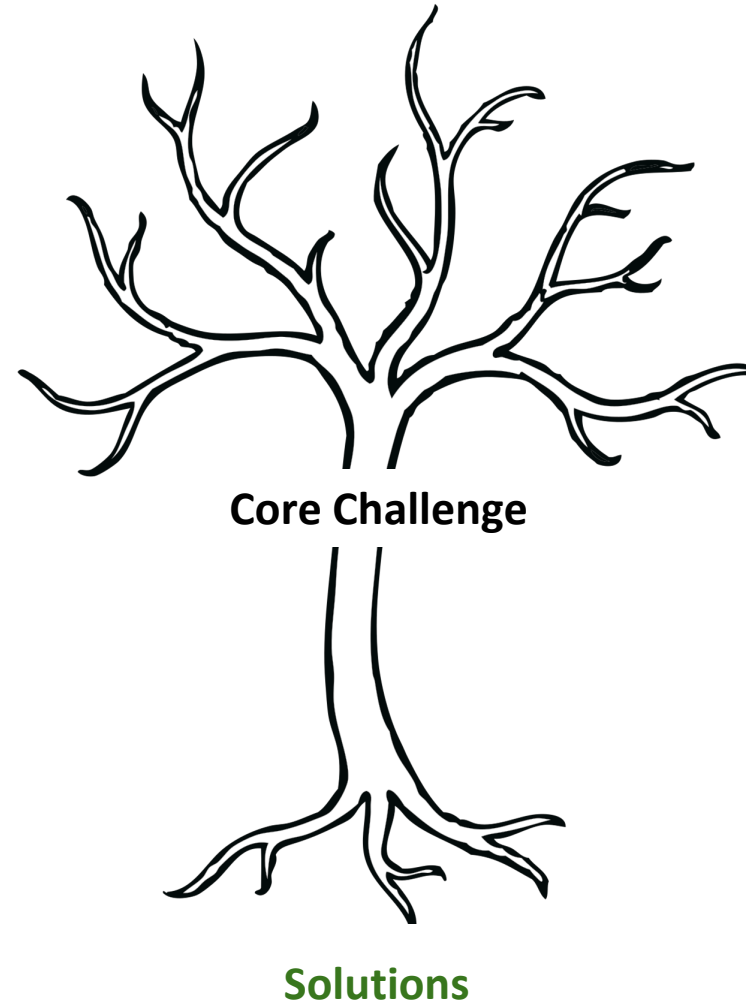
Think through potential solutions to those challenges

Add solutions in the **roots** of your solution tree

Add what you think would change in the community in the **limbs** as a result of implementing that solution

Add top actions to the **action table**

Changes you Expect to see
in the Community



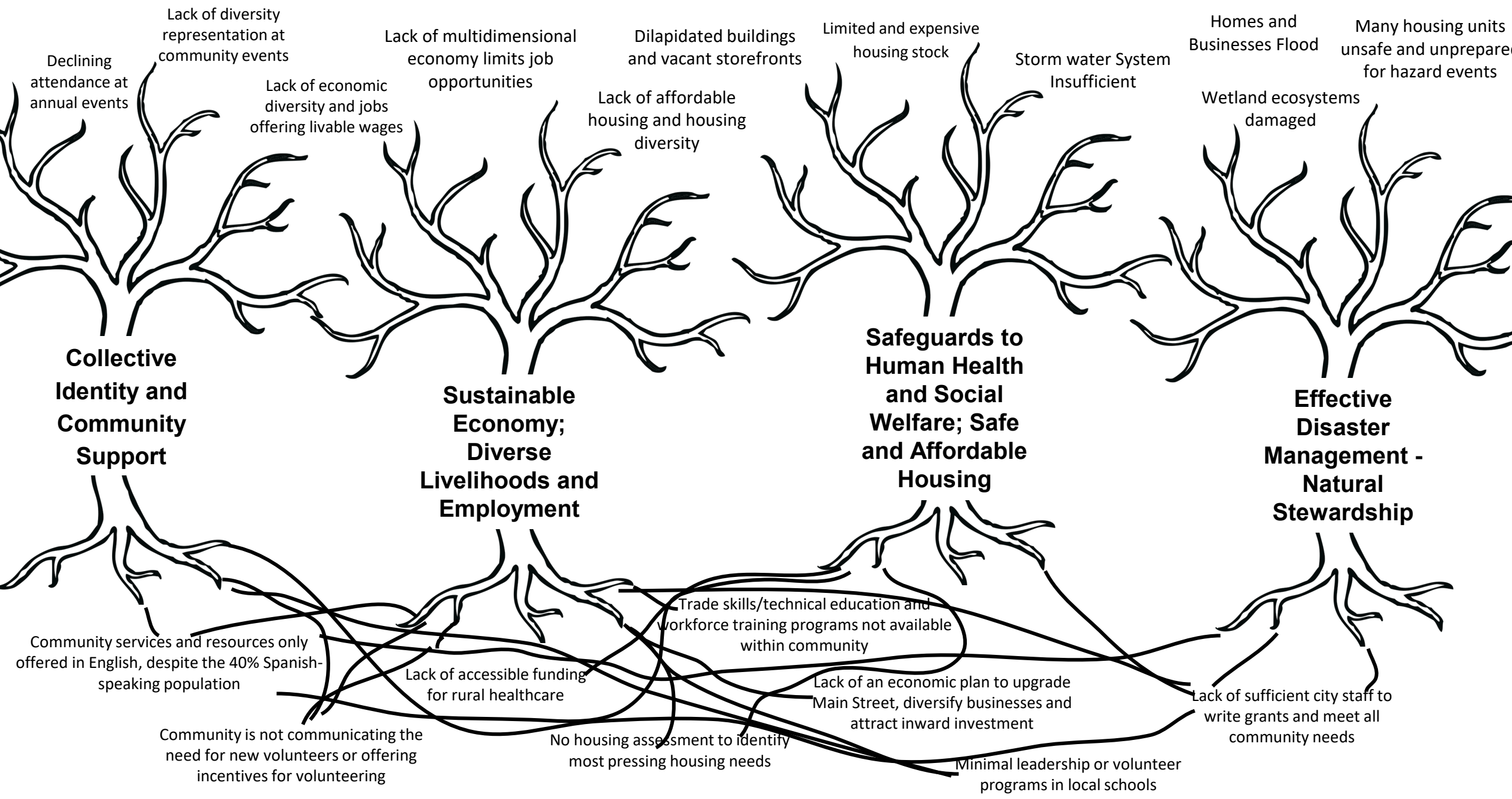
Group Guidelines

- Listen actively
- 2 minute rule
- Engage all
- Be Respectful

Action	Opportunities for Resilience	Who will be involved from your community (and county)?	What resources are available to support efforts?

Action	Opportunities for Resilience	Who will be involved from your community (and county)?	What resources are available to support efforts?
Collaborate on a Economic Development and Main Street upgrade plan	Economic growth and opportunity Increase local jobs Increase local wages (Sustainable Economy; Diverse Livelihoods)	Brightly Chamber of Commerce City of Brightly	Economic Development Association USDA Rural Development Main Street Idaho
Seek partnerships with non-profit organizations to assess and identify solutions for housing challenges	Increase cost-effective workforce housing stock (Safe and Affordable Housing)	Nonprofits in housing (housing trust) Brightly Chamber of Commerce Public Health Director Public Works	Community Health Needs Assessments Idaho Housing and Finance Association Grants and Resources Idaho Policy Institute
Increasing civic engagement education	Building inclusive culture Educate and inform about the process Breaking down silos; Engage youth (Collective Identity & Community Support)	City of Brightly Elected Officials School Board High school teachers Non-profit organizations	Rural Development Initiative Civic Engagement Alliance - Action Network
Submit FEMA grant for hydrology assessment to address flooding	Ecosystem improvements Community drinking water Erosion Grant opportunities create new grant opportunities (Effective Disaster Management; Natural Stewardship; Built to Last)	County Emergency Management USDA Natural Resource and Conservation Services Soil & Water Conservation Public Health City of Brightly Public Works	EPA Northwest Environmental Justice Center USDA NRCS Boise State Hazard and Climate Resilience Institute

Root causes manifest themselves as issues across many sectors of your community





Take Home Message:

Community Resilience is multifaceted and requires a collaborative approach

Goal: Reduce social and economic impacts of adverse events while building toward a healthy, thriving community.



Your new tools!



HAZARD AND CLIMATE RESILIENCE INSTITUTE

Thank You!

Session materials available for
download:

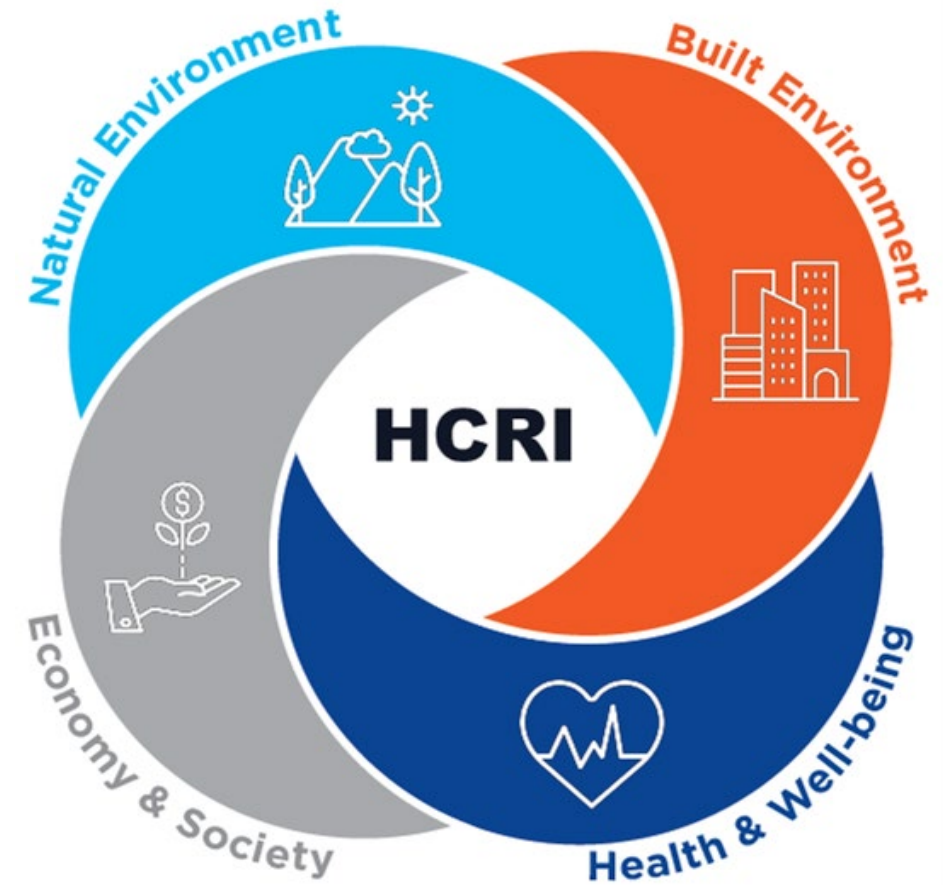


Dr. Brittany Brand, Director for the Boise State HCRI

brittanybrand@boisestate.edu



BOISE STATE UNIVERSITY



<https://www.boisestate.edu/research-hcri/>