



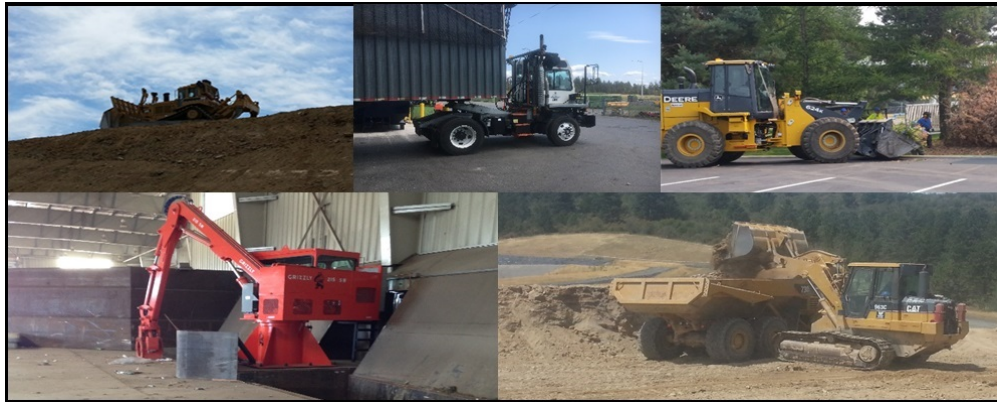
KOOTENAI COUNTY
invites applications for the position of:

Equipment Operator - SW

DEPARTMENT: Solid Waste
SALARY: \$15.90 - \$18.51 Hourly
OPENING DATE: 04/09/21
CLOSING DATE: 04/30/21 05:00 PM
SUMMARY:

DEPARTMENT: Solid Waste
SALARY: \$15.90 to \$18.51 Hourly
OPENING: 04/08/21 08:00 AM
CLOSING: 04/30/21 05:00 PM

KOOTENAI COUNTY invites
Applications for the position of:
Equipment Operator



Do you enjoy operating heavy equipment locally with set hours?

Are you interested in learning specialized refuse equipment and processes?

Do you prefer a variety of different equipment operation daily?

If you answered yes to these questions, you may be the perfect candidate for the Solid Waste Equipment Operator job. This position involves skilled work in the operation of multiple types of heavy equipment and related manual and maintenance tasks in daily operation of solid waste disposal facilities. Job highlights include:

- \$15.90 - \$18.51 starting wage range DOE
- Public Employee Retirement System of Idaho (PERSI) pension plan with five year vesting, 11.94% employer contribution, and lifetime payout upon retirement.
- Excellent comprehensive benefits package. View the entire benefits package at www.kcgov.us/346/Benefits
- On the job training, including specialized equipment operation, HAZWOPER, First Aid/CPR, Flagger, CFC removal and many other skills

- Year round, full-time set schedules
- Day shift only, work between 6:30 am – 5 pm. Locations vary within the Solid Waste Department
- Daily variety in job tasks – each day will likely have different equipment and tasks
- Part of a fun, dynamic group of skilled co-workers

Qualifications Required

- High school diploma or general education degree (GED)
- Minimum of forty-eight (48) months related experience in equipment operation or education; or equivalent combination of education and experience
- Possession of valid driver's license and ability to obtain a CDL driver's license AND be insurable
- Reliable personal transportation to commute to any of the designated Solid Waste sites
- Ability to work in all weather conditions
- Willingness to learn new skills and obtain necessary certifications within designated time frames
- View [job description](#) for full requirements

How to Apply

Apply online at <https://www.kcgov.us/356/Employment-Opportunities> . Attach cover letter and resume to the online application. Must successfully pass Kootenai County's pre-employment and subsequent drug tests.

EOE/Vets Preference/Drug Free Workplace

Contact Us

Human Resources: (208) 446-1640 or kchr@kcgov.us

Our Mission

It is the mission of Kootenai County Government to provide professional service with regard to public safety, essential service and preservation of natural resources and responsible management of public assets for the common well-being of our citizens.

:

:

:

APPLICATIONS MAY BE FILED ONLINE AT:
<http://www.kcgov.us/departments/personnel/jobs/>

Position #2021-00053
EQUIPMENT OPERATOR - SW
CK

451 N Government Way
PO Box 9000
Coeur d'Alene, ID 83816
(208) 446-1640

kchr@kcgov.us

Equipment Operator - SW Supplemental Questionnaire

- * 1. For this application, we require a cover letter, resume and copies of certifications.
Please verify that you have attached a cover letter, resume and copies of certifications
prior to submitting this application.

☐ Yes ☐ No

- * 2. If you are a veteran, did you attach a copy of your DD214?

☐ Yes ☐ No

* Required Question